

# UNITED IN PURPOSE



**UNITED WAY**  
South Central  
Massachusetts

2024 ANNUAL  
CAMPAIGN



Shana Bandeleian,  
2024-25 Campaign  
Chair

“Supporting your local community is key to making sure everyone thrives. At the United Way, we link people to the resources and services they need through our trusted partner agencies, making sure that vulnerable populations get the help they deserve and keeping our community strong and connected.”



**UNITED WAY**  
South Central  
Massachusetts

# IMPACT AREAS



## HEALTHY COMMUNITY

Improving health and well-being for all

- Health access and equity
- Mental health support
- Nutrition and food security
- Substance misuse recovery and prevention



## YOUTH OPPORTUNITY

Helping young people realize their full potential

- Family engagement
- Literacy development
- College and career readiness
- Childcare and early childhood education
- In-school, after-school and summer learning



## FINANCIAL SECURITY

Building financial stability and strength

- Job readiness and workforce development
- Adult education and job training
- Financial education and coaching
- Homelessness prevention
- Public benefits access



## COMMUNITY RESILIENCY

Addressing urgent needs today for a better tomorrow

- Crisis hotline and support
- Disaster relief and recovery
- Emergency preparedness

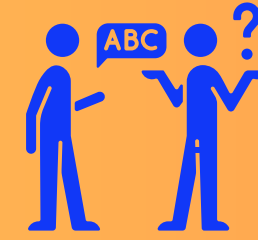
# IMPACT BY THE NUMBERS

25 AGENCIES - 27 PROGRAMS



1378

Children received quality day care and afterschool school enrichment



117

Individuals improved their English language and literacy skills



3032

Shelter nights



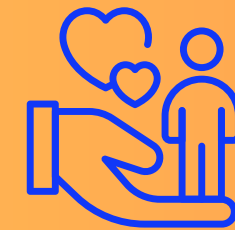
6,738

Calls from area residents to MA 2-1-1



176,000

Meals provided to families, older adults and home-bound individuals



320

Neglected and abused children were provided advocacy services



150

individuals received civil legal assistance



1208

Individuals and families received emergency stabilization services



Massachusetts  
**2-1-1**

*Get Connected. Get Answers.*



**UNITED WAY**  
South Central  
Massachusetts

## COMMUNITY RESILIENCY

Mass 2-1-1 , a Statewide  
Human Service  
Information  
and Referral Program



# PLEASE, GIVE TODAY!

United Way SCM

@UnitedWay-SCM



**venmo**



**UNITED WAY**  
South Central  
Massachusetts

[www.uwscm.org/pledge](http://www.uwscm.org/pledge)



SCAN TO DONATE